

# *Complete Streets for Scarborough*



# *Streets with all users in mind*





# *Vision & Purpose*

- *Mobility & Independence for All Ages*
- *Transportation Choice*
- *Active Lifestyles & Quality of Life*
- *Well-Connected Network*
- *Congestion Relief*



# *Context Sensitive*

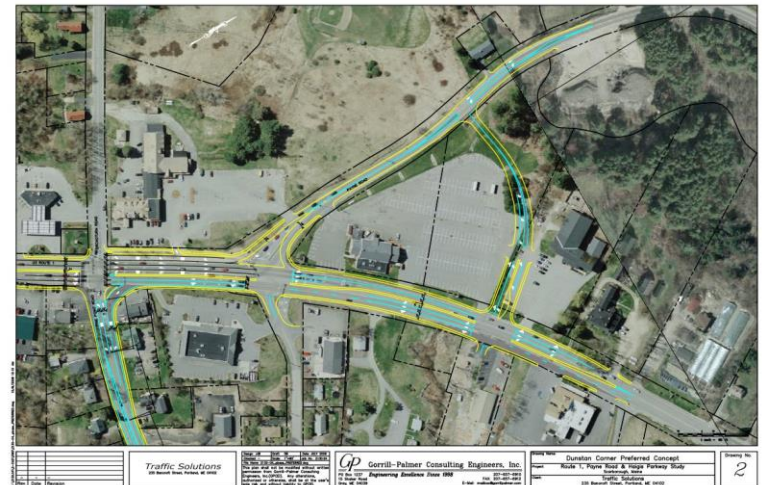
- *Town Centers & Commercial Corridors*
- *Village Residential*
- *Suburban*
- *Rural*





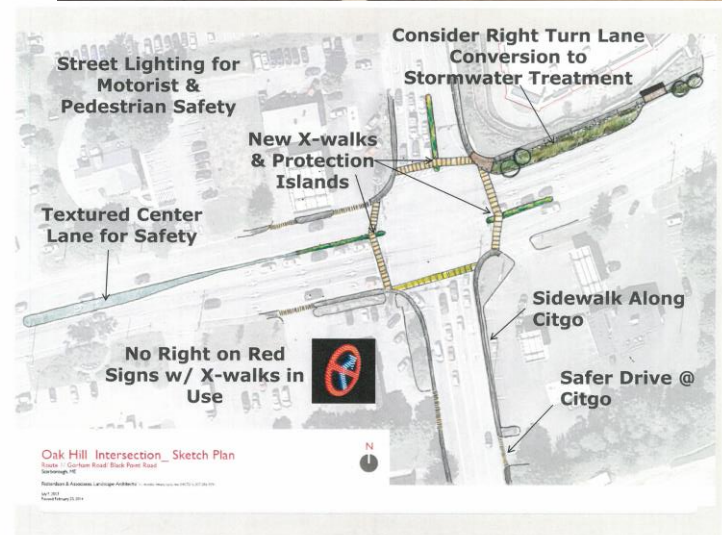
# *Recent Town Efforts*

- *New Sidewalks – Black Pt, Pine Pt, Route 1*
- *Dunstan Corner – auto improvements, sidewalks, x-walks, future bus shelters*



# *Recent Town Efforts*

- *Pleasant Hill – shoulders, bike path, context sensitive road width*
- *Oak Hill pedestrian & safety improvements (underway)*
- *New Eastern Trail X-ings*



# *Public-Private Partnerships*

*Planning Board (& our ordinances) ask applicants to do their part:*

- *Biddeford Savings*
- *Bellevita*
- *Wallgreens*
- *Eastern Village*
- *Martins Pt*
- *Town & Country*



Martin's Point Health Care - 153 US Route 1

Sketch Plan

October 6, 2013

Martin's Point Health Care

SEBAGO  
ENGINEERS



*Development layout, building orientation, scale, landscaping really matter!*





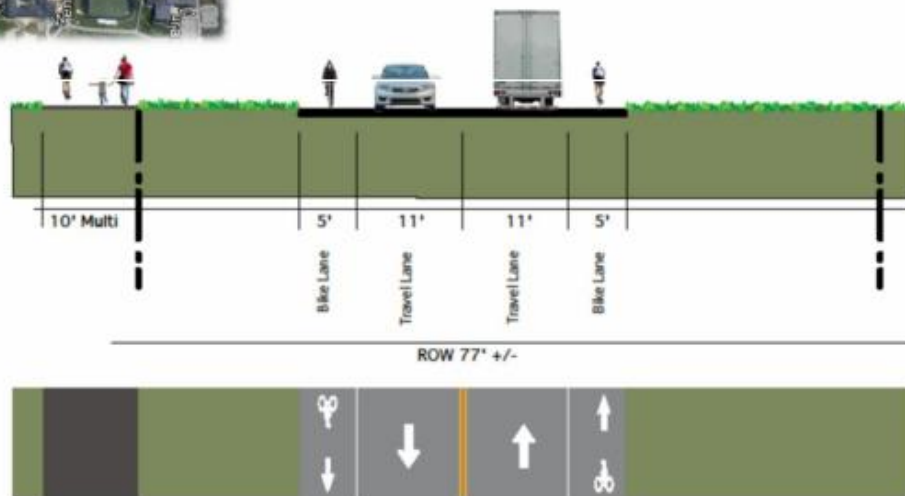
# *Deficiencies & Needs*

- *Gorham Rd*
- *Pine Point / East Grand Ave*
- *Network Planning - Oak Hill & Dunstan*
- *Transit Accommodations*
- *Consistency*



# Addressing the Needs

- *Gorham Rd Preliminary Design & Multi-Phase Capital Project*



PROPOSED TYPICAL SECTION 2: WENTWORTH TO SAWYER



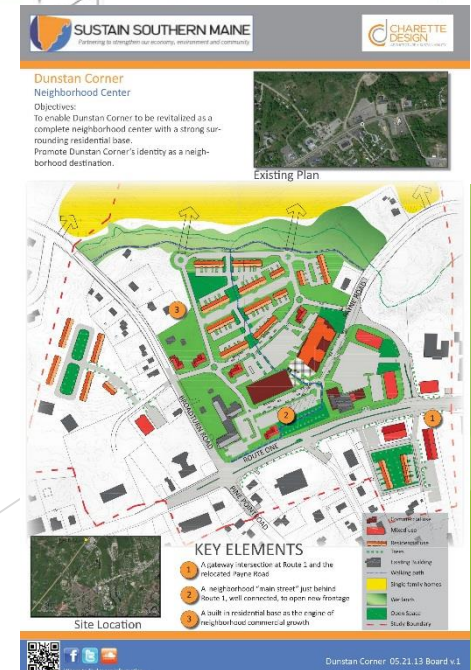
# *Addressing the Needs*

- *Pine Point Rd – Retrofit this Fall*



## Addressing the Needs

- *Pine Point / East Grand Ave*
  - *Network Planning – Oak Hill & Dunstan*
  - *Transit Accommodations*
  - *Consistency with Re-paving etc.*
- 





# *Complete Streets Policy*

- *Policy statement & vision for Scarborough*
- *Applies to road projects – CIPs, rehabs, retrofits, new developments etc.*
- *Promotes Road Network Planning & Interconnections*
- *Sensitive to Road / Land Use Context*

# *Complete & Connected Streets = More Livable Scarborough*

- *Transportation choices & independence*
- *Reduce congestion*
- *Health & safety improvements*
- *Community connections*
- *Supports people places*